

dedicated to James Causley Windram

IMPORTANT NOTICE
The unauthorised copying
of the whole or any part of
this publication is illegal

SECOND SUITE IN F

for Military Band

1. MARCH

GUSTAV HOLST

Op.28, No.2

revised and edited by
COLIN MATTHEWS

Euphonium.

Allegro

1

A

B *p* 2nd Hn.

C

D

Bass Trom. *dim.*

E Solo *mf*

F

G *cres.* **ff**

FINE

H *ff* *dim.* *p*

I *f*

mf

J *p*

K *cresc.* *ff*

D. C. al Fine

2. SONG WITHOUT WORDS

'I'll love my love'

Andante **14** *ad lib.* **3** **A** *a tempo*

pp

1

ad lib. **1** *Solo.* **1**

3. SONG OF THE BLACKSMITH

Moderato e maestoso

ff stacc.

dim. p

A

B

mf (stacc.)

p

stacc. cres. f

C

fff (stacc.)

2.

Detailed description: This musical score is for the Euphonium part of 'Song of the Blacksmith'. It consists of ten staves of music. The first staff begins with a dynamic marking of *ff stacc.* and features a series of eighth-note patterns. The second staff includes a *dim.* marking and a *p* dynamic. Section A is marked with a large 'A'. The third staff continues the rhythmic patterns. Section B is marked with a large 'B' and a *mf (stacc.)* dynamic. The fourth staff has a *p* dynamic and a bracketed section. The fifth staff features a *stacc.* marking followed by a *cres.* leading to a *f* dynamic. Section C is marked with a large 'C' and a *fff (stacc.)* dynamic. The sixth staff continues with eighth-note patterns. The seventh staff has a *mf cres.* marking and a *f* dynamic. The eighth staff includes a *dim.* marking and a *p* dynamic. The ninth staff concludes with a *2.* marking and a repeat sign. The piece ends with a double bar line.

4. FANTASIA ON THE 'DARGASON'

Allegro moderato

16 A

1 1 1

p

13

mf cres. f

B

3 3

dim. p

Detailed description: This musical score is for the Euphonium part of 'Fantasia on the Dargason'. It consists of three staves of music. The first staff begins with a measure rest of 16 measures, followed by a section marked 'A' with a *p* dynamic. The second staff starts with a measure rest of 13 measures, followed by a *mf cres.* marking and a *f* dynamic. Section B is marked with a large 'B'. The third staff features a *dim.* marking and a *p* dynamic. The piece concludes with a double bar line.

Symphonic Band Scales

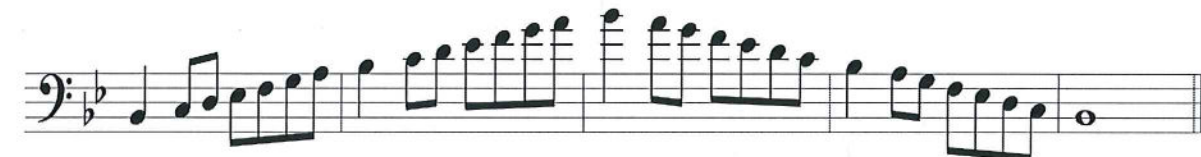
C Major
Concert C



F Major
Concert F



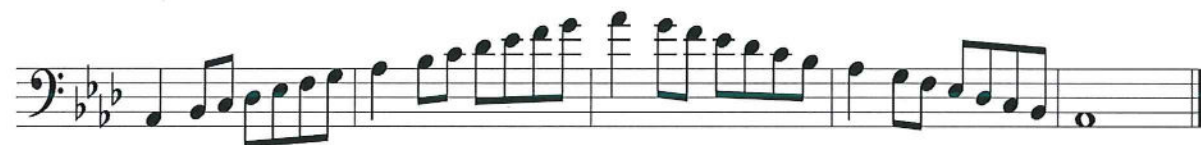
B♭ Major
Concert B♭



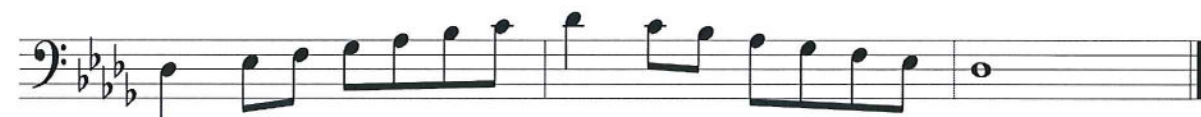
E♭ Major
Concert E♭



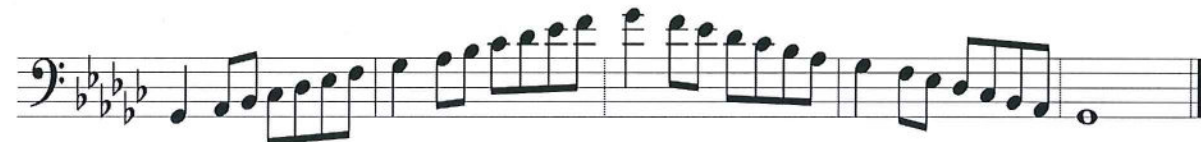
A♭ Major
Concert A♭



D♭ Major
Concert D♭



G♭ Major
Concert G♭



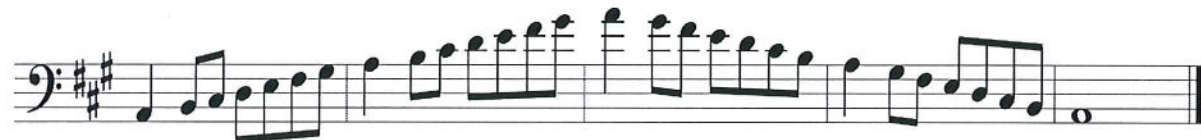
B Major
Concert B



E Major
Concert E



A Major
Concert A



D Major
Concert D



G Major
Concert G

