

IMPORTANT NOTICE
The unauthorised copying
of the whole or any part of
this publication is illegal

dedicated to James Causley Windram

SECOND SUITE IN F

for Military Band

1. MARCH

GUSTAV HOLST
Op.28, No.2
revised and edited by
COLIN MATTHEWS

Oboe

Allegro

1 *f* 8 *f* **A**

p **B**

f **C** 8 **D**

dim. *p* **E** 16 **F** 15 **G** *ff*

FINE

ff **H** 16 **I** 7 *p* **J**

cresc. **K** *ff*

Merit School of Music
Joy Faith Knapp Music Centre
38 Southview
Barnsley

D. Cal Fine

2. SONG WITHOUT WORDS

'I'll love my love'

Andante

Musical score for Oboe, 'I'll love my love'. The piece is in 4/4 time and begins with a treble clef and a key signature of three flats (B-flat, E-flat, A-flat). The tempo is marked 'Andante'. The score consists of five staves. The first staff starts with a *pp* dynamic. The second staff includes an *ad lib.* marking and a fermata over a triplet of notes. The third staff is marked *Ad tempo* and begins with a *p* dynamic. The fourth and fifth staves conclude the piece with a *pp* dynamic and a fermata over the final notes, which are numbered 1 and 2.

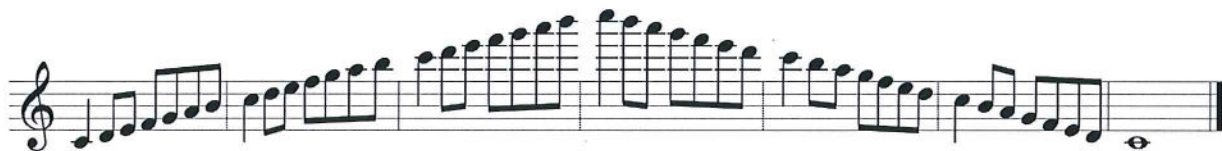
3. SONG OF THE BLACKSMITH

Moderato e maestoso

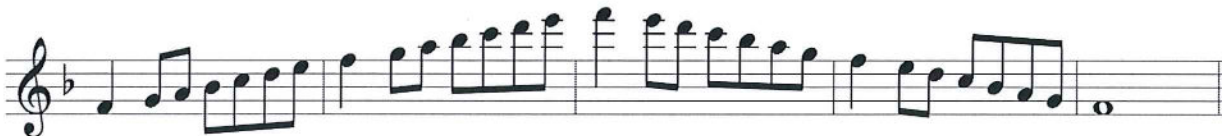
Musical score for Oboe, 'Song of the Blacksmith'. The piece is in 4/4 time and begins with a treble clef and a key signature of one flat (B-flat). The tempo is marked 'Moderato e maestoso'. The score consists of six staves. The first staff features a series of rests with first endings (marked '1') and ends with a *f* dynamic. The second staff is marked 'A' and contains a melodic line. The third staff is marked 'B' and contains a melodic line with a *p* dynamic. The fourth staff is marked 'C' and contains a melodic line with a *cres.* dynamic leading to *f* and *fff* dynamics. The fifth and sixth staves continue the melodic line with various dynamics and end with a fermata.

Symphonic Band Scales

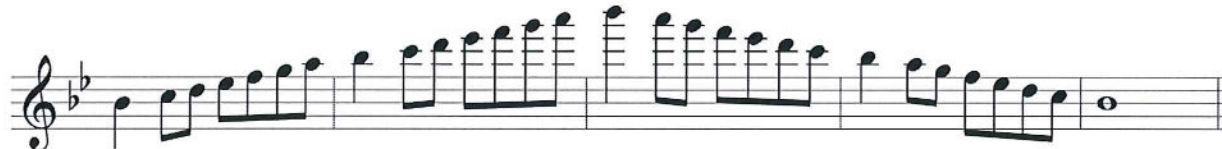
C Major
Concert C



F Major
Concert F



Bb Major
Concert Bb



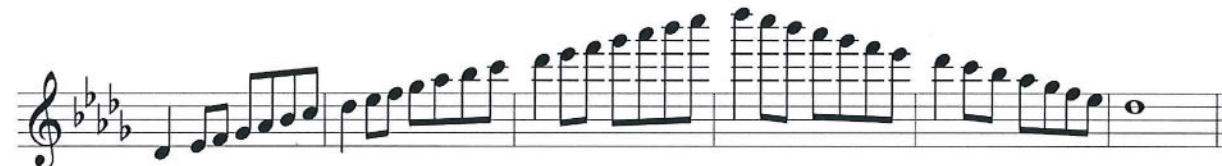
Eb Major
Concert Eb



Ab Major
Concert Ab



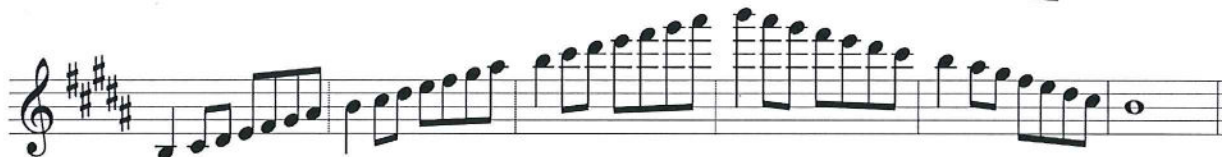
Db Major
Concert Db



Gb Major
Concert Gb



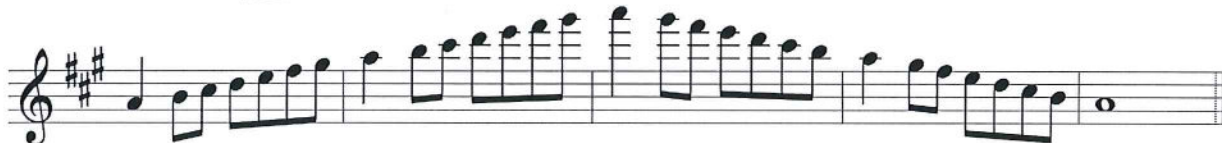
B Major
Concert B



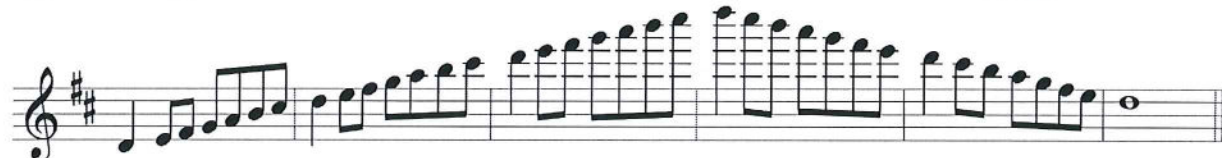
E Major
Concert E



A Major
Concert A



D Major
Concert D



G Major
Concert G

