

34

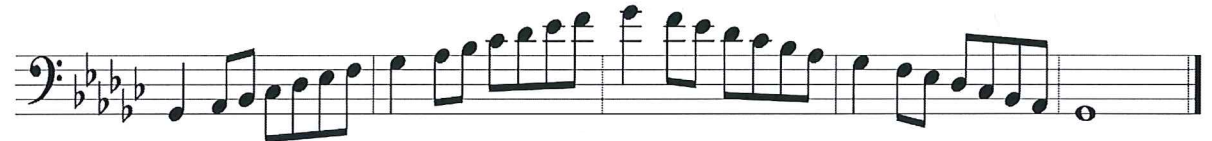
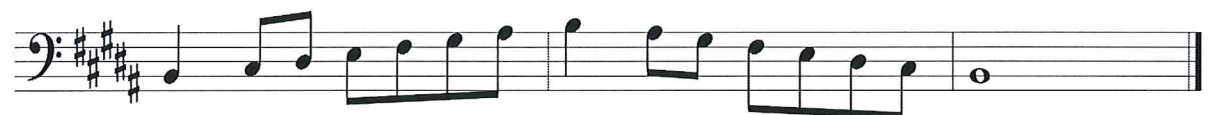
Andante



Allegro moderato (♩.=120)

No. 11

The musical score for No. 11 is written in bass clef with a key signature of one flat (B-flat). The tempo is marked "Allegro moderato" with a quarter note equal to 120 beats per minute (♩.=120). The score consists of five staves of music. The first staff begins with a treble clef and a key signature change to one flat. The music is characterized by flowing eighth and sixteenth notes, often grouped with slurs. The dynamics are marked with *p* (piano) and *mf* (mezzo-forte) at the bottom of the fifth staff.

TROMBONE**Symphonic Band Scales****C Major**
Concert C**F Major**
Concert F**Bb Major**
Concert Bb**Eb Major**
Concert Eb**Ab Major**
Concert Ab**Db Major**
Concert Db**Gb Major**
Concert Gb**B Major**
Concert B**E Major**
Concert E**A Major**
Concert A**D Major**
Concert D**G Major**
Concert G